

# Model

# 534D10-45

## TELEHANDLER

### REAR PIVOT STEER



### Performance

#### Rated Capacity

At 24 in. (610 mm) load center,  
10,000 lb (4,536 kg)

#### Maximum Lift Height

45 ft (13.7 m)

#### Frame Leveling

8 degrees

#### Lift Speed (boom retracted)

Up: 11.4 sec  
Down: 9 sec

#### Boom Speed

Extend: 13 sec  
Retract: 15 sec

#### Travel Speeds Forward

2WD 0-19 mph (30.6 kmph)  
4WD 0-6.5 mph (10.5 kmph)

#### Drawbar Pull (Loaded)

21,000 lb (9,526 kg)

#### Operating Weight

With 72 in. (1.8 m) carriage and forks,  
26,800 lb (12,156 kg)

### Standard Specifications

#### Engine

Make and Model	Cummins QSB4.5 Turbocharged
Fuel	Diesel
Cycles	4
No. of Cylinders	4
Displacement	276 cu in (4.5 L)
Rated Speed	2,500 rpm
Max. Gross BHP	110 hp (82 kW)
Fuel Tank	38 gal (144 L)

#### Engine Filters

Two-stage dry air cleaner — centrifugal  
pre-cleaner with continuous dust ejector  
plus replaceable dry filter element.

Visual service indicator.

Replaceable spin-on fuel filter. Full-flow  
replaceable spin-on engine oil filter.

#### Electrical System

Voltage: 12V

Alternator: 65 amp

Battery: 1050 cold cranking amps at 0°F

#### Hydrostatic Drive

6,300 PSI (43,437 kPa) closed loop with  
piston pump and motors.

Integral reservoir with implement hydraulics.

8 micron suction filter for charge pump.

Self-contained, swashplate design, variable  
displacement, over center, piston pump.

Neutral start switch. (Park brake must  
also be engaged to start.)

2WD — 4WD inching.

Audible back-up travel alarm mounted  
in counterweight area signals  
reverse movement.

#### Axles

Planetary hubs with piston motors on  
rear axle.

Piston motor-driven planetary front axle  
with high-bias differential.

#### Service Brakes

Hydraulic wet disc brake on each front wheel.

Hydraulic dynamic braking on front axle and  
both rear wheels.

#### Parking Brakes

Wet disc spring-applied electro/hydraulic  
release, fail-safe on both front wheels.

Light on dash indicates when brakes are on.

#### Tires

Standard: 14:00 x 24 — 12PR, G2 type.

#### Cab

Certified ROPS/FOPS structure with horn,  
back-up alarm and standard right side  
rear view mirror.

Forward, neutral, reverse lever on left  
of steering column.

Single foot pedal control provides both  
braking and inching for lifting while  
maneuvering vehicle.

Electro/hydraulic traction lock valve for  
superior tractive effort.

#### Steering

Hydraulic power steering with manual backup.

Rear wheel steering, 90° pivot around either  
front tire.

Outside turning radius is less than  
chassis length.

#### Instruments

Volt meter, hourmeter, engine oil pressure,  
temperature, fuel gauge.

All gauges protected by clear acrylic cover.

#### Controls

Grouped for operator comfort and convenience.

2WD and 4WD switch on dash.

Boom lift and crowd on single joystick.

Right-hand tilt and sway lever.

Foot throttle.

Floor mounted traction lock switch.

#### Hydraulic System-Implement

Single-section gear pump.

40 gal (151.6 L) system capacity.

8 micron filter with visual service indicator  
and suction strainer.

Lift, telescope, tilt and sway cylinders have  
safety checks to prevent dropping of  
load in the event of hose or other  
hydraulic failure.

#### Auxiliary Hydraulics

### Accessories & Options

#### Enclosed Cab

#### Left Hand Tilt/Sway

#### Joystick Mounted Tilt

#### Auxiliary Electrics

#### Instant Hook

#### Light Group

#### Pintle Hook

#### Tires:

Foam-filled  
Rock

Solid

### Attachments

#### Standard Carriage

50 in. (1.3 m) or 60 in. (1.5 m) or 72 in. (1.8 m)

#### Side-Tilt Carriage

50 in. (1.3 m) or 60 in. (1.5 m) or 72 in. (1.8 m)

#### Swing Carriage

72 in. (1.8 m); 90 degrees

#### Sheet Material Adapter

#### Tower

8 ft (2.4 m); 50 in. (1.3 m) Standard or  
Side-tilt Carriage

#### Pallet Forks

2.36 x 4 x 48 in. (60 mm x 102 mm x 1.2 m)

2.36 x 5 x 48 in. (60 mm x 127 mm x 1.2 m)

2.00 x 6 x 72 in. (51 mm x 152 mm x 1.8 m)

#### Lumber Forks

1.75 x 7 x 60 in. (44 mm x 178 mm x 1.5 m)

2.36 x 6 x 60 in. (60 mm x 152 mm x 1.5 m)

#### Cubing Forks

2 x 2 x 48 in. (51 mm x 51 mm x 1.2 m)

#### Material Bucket

72 in. (1.8 m), 1.0 cu yd (0.76 m³)

96 in. (2.4 m), 1.5 cu yd (1.15 m³)

102 in. (2.6 m), 2.0 cu yd (1.53 m³)

#### Grapple Bucket

96 in. (2.4 m), 1.75 cu yd (1.34 m³)

#### Truss Boom

12 ft (3.7 m), 2,000 lb (907 kg) capacity

15 ft (4.6 m), 2,000 lb (907 kg) capacity

12 ft (3.7 m) with winch, 2,000 lb  
(907 kg) capacity

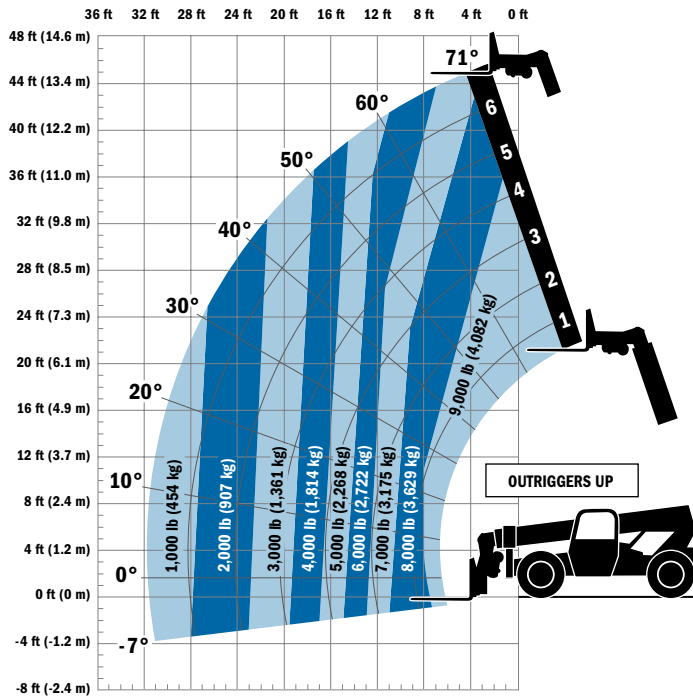
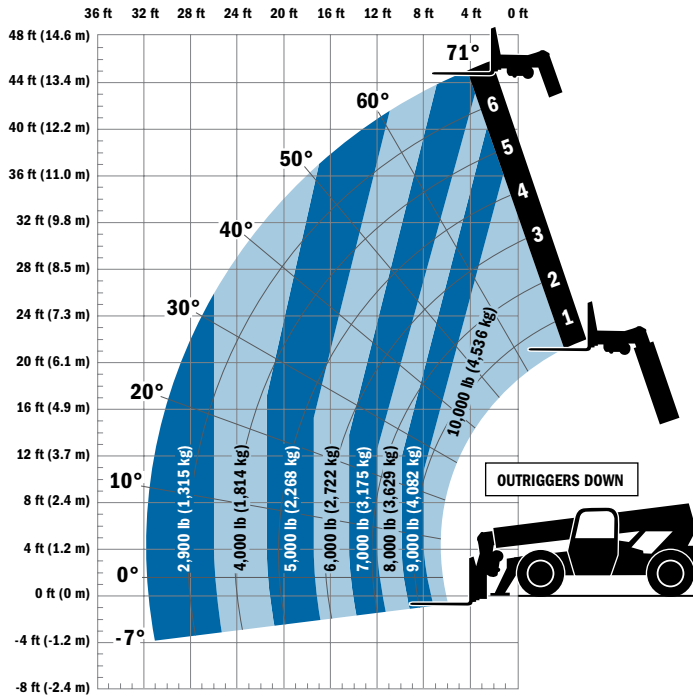
#### Fork Mounted Work Platform

8 ft (2.4 m), 1,000 lb (455 kg) capacity

#### Lifting Hook



# Model 534D10-45 TELEHANDLER REAR PIVOT STEER



## Dimensions

Length (less forks)	237 in. (6.01 m)
Width	98.8 in. (2.50 m)
Height	93 in. (2.36 m)
Wheelbase	135 in. (3.42 m)
Ground Clearance	19.3 in. (490 mm)
Outside Turning Radius	175 in. (4.44 m)
Max. Reach from Front Tires to	
24 in. (610 mm) Load Center	31.5 ft (9.60 m)

Distributed By:



[www.onesourcerental.com](http://www.onesourcerental.com)

## IMPORTANT

Rated lift capacities shown are with machine equipped with carriage and pallet forks. The machine must be level on a firm surface with undamaged, properly inflated tires. Machine specifications and stability are based on rated lift capacities at specific boom angles and boom lengths. (If specifications are critical, the proposed application should be discussed with your dealer.)

DO NOT exceed rated lift capacity loads, as unstable and dangerous machine conditions will result.

DO NOT tip the machine forward to determine the allowable load.

Use only JLG approved attachments with proper material handler model/attachment load capacity charts displayed in the operator's cab. OSHA requires all rough terrain forklift operators be trained according to OSHA 29 CFR 1910.178 (1).



**JLG Industries, Inc.**

1 JLG Drive  
McConnellsburg, PA 17233-9533  
Telephone 717-485-5161  
Toll-free in US 877-JLG-LIFT  
Fax 717-485-6417  
[www.jlg.com](http://www.jlg.com)

An Oshkosh Corporation Company

Due to continuous product improvements, JLG Industries reserves the right to make specification and/or equipment changes without prior notification. This machine meets or exceeds ANSI/ITSDF B56.6-2005 as originally manufactured for intended applications.

Form No.: SS-G534D1045-0104-15M  
Part No.: 3132226  
Printed in USA